



UNIVERSITY of CAMBRIDGE
ESOL Examinations

Cambridge English Key

Key English Test (KET)
CEFR Level A2



*A great first step
in learning English*

Internationally accepted

Cambridge English: Key, also known as *Key English Test (KET)*, is accepted by employers, educational institutions and government departments around the world as a qualification in basic English.

The following are just a few of the organisations that accept *Cambridge English: Key*.

Philips	Vietnam National	Beijing Local Taxation
Pepsi Cola	University	Bureau
Motorola	Universidad de	Department of Education
L'Oréal	Salamanca (Spain)	and Training (Vietnam)
Electrolux	Sugiyama University	Académie de Limoges
Agfa-Gevaert	(Japan)	(France)

For the full list of organisations that accept *Cambridge English: Key*, please visit

www.CambridgeESOL.org/recognition

Working and studying in the UK

The UK Border Agency accepts *Cambridge English: Key* as meeting the language requirements for visa applications under some Tier 2 categories, and for spouses and civil partners.*

Visit **www.CambridgeESOL.org/UK-immigration** for more details.

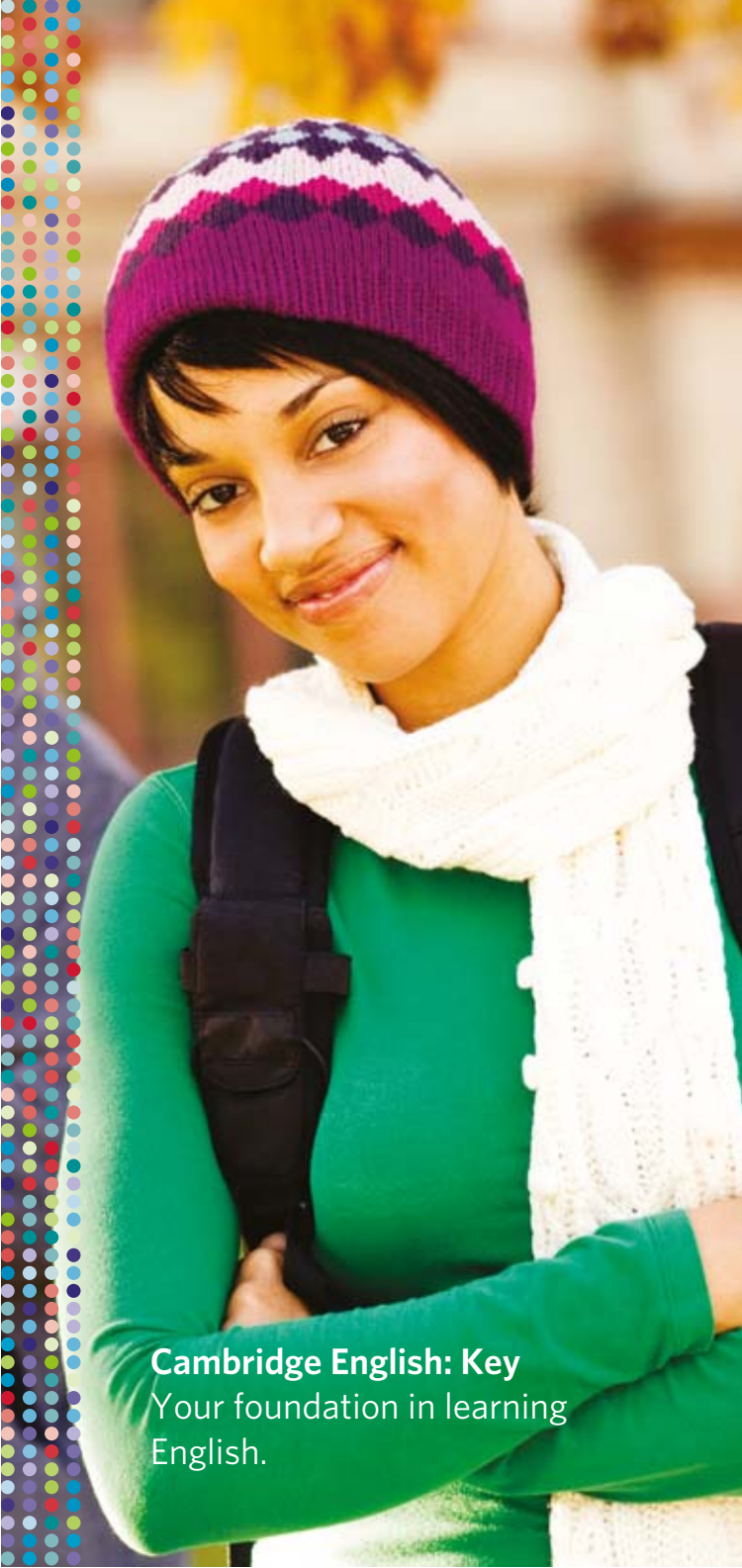
Find out more

 **www.CambridgeESOL.org**

 **[www.Facebook.com/CambridgeESOL](https://www.facebook.com/CambridgeESOL)**

 **[www.Twitter.com/CambridgeESOL](https://www.twitter.com/CambridgeESOL)**

*Information correct at time of printing, August 2011.



Cambridge English: Key
Your foundation in learning
English.

Why take Cambridge English: Key?

Real-life language skills

Preparing for *Cambridge English: Key* will give you the practical English skills to:

- understand and use basic phrases and expressions
- introduce yourself and answer basic questions about your personal details
- interact with English speakers who talk slowly and clearly
- write short, simple notes.

Reliable

Backed by the largest research programme of its kind, Cambridge English exams provide the most reliable reflection of your language skills.

Choice

Cambridge English: Key can be taken at exam centres around the world. You can choose to take your exam on a computer or on paper.

Fair

All the major varieties of English are accepted in Cambridge English exams. Our exams are designed to be fair to all learners from all parts of the world.

Support

A wealth of materials are available to help you prepare for your exam.

A Cambridge English qualification

Once you have earned a Cambridge English certificate, you hold one of the most valuable English qualifications in the world.

www.CambridgeESOL.org/Key

A great first step in learning English

Cambridge English: Key is developed using the principles and approaches of the Common European Framework of Reference for Languages (CEFR) – the internationally accepted system for describing language ability.

Cambridge English: Key is set at Level A2 of the framework and shows that you can use English to communicate in simple situations and have achieved a good foundation in learning English.



Your results

Cambridge English: Key – Level B1

New for September 2011

Pass with Distinction

Exceptional candidates sometimes show ability beyond Level A2. From September 2011, if you achieve a Pass with Distinction, you will receive the *Key English Test* certificate stating that you demonstrated ability at Level B1.

Cambridge English: Key – Level A2

Pass with Merit, Pass

If you achieve a Pass or Pass with Merit in your exam you will be awarded the *Key English Test* certificate at Level A2. Reaching this level is an important step in learning to use English to communicate in real-life situations, and gives you an internationally accepted certificate.

Level A1 certificate

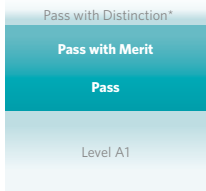
We believe it is important to recognise your achievement, even if you do not reach Level A2.

If your performance is below Level A2, but falls within Level A1, you will receive a Cambridge English certificate stating that you demonstrated ability at A1 level.

The Common European Framework of Reference

Cambridge English: Key

C Proficient user	C2
	C1
B Independent user	B2
	B1
A Basic user	A2
	A1



A great first step in communicating in English

* Pass with Distinction will be introduced from September 2011

Cambridge English: Key
Start communicating in English.



Format of the exam

Cambridge English: Key has three papers:

Reading and Writing: 1 hour 10 minutes

Shows you can understand simple written information such as signs, brochures, newspapers and magazines.

Listening: 30 minutes

Requires you to be able to understand announcements and other spoken material when people speak reasonably slowly.

Speaking: up to 10 minutes

Tests your ability to take part in a conversation by answering and asking simple questions. Your Speaking test will be conducted face-to-face with one or two other candidates. This makes your test more realistic and more reliable.

Download sample papers at
www.CambridgeESOL.org/Key



Internationally accessible

Cambridge English exams can be taken at more than 2,700 centres across 130 countries, throughout the year.

Comprehensive support

To help you prepare effectively and get the most out of your exam experience, a wealth of exam resources are available, including sample papers, handbooks and exam tips. Find out more about the support we offer at:

www.CambridgeESOL.org/Key

Flexible test options

You can choose to take your exam on paper or on a computer.

Why choose a computer-based test?

- more choice of exam dates – take your exam at a time that suits you
- the same certificate – the exam is the same as the paper-based version
- shorter registration – register for the exam as little as a week before taking it
- faster results – view your exam results in as little as two weeks
- no extra preparation required.

The world's most valued English qualifications

Employers and other organisations that accept Cambridge English exams can easily check your result online with our secure online Results Verification Service. We are also introducing exam day photos for added security and to make your certificate even more valued and trusted.

Join the Cambridge English world

Why not immerse yourself in the Cambridge English community? More than 3.3 million people from all over the world choose Cambridge English exams each year.



Next steps to taking Cambridge English: Key

Step 1

Find out more

To find out more about *Cambridge English: Key*, go to

www.CambridgeESOL.org/Key

Step 2

Test your level

Take our free online test and see if *Cambridge English: Key* is the right exam for you.

www.CambridgeESOL.org/testyourenglish

Step 3

Find a Cambridge ESOL exam centre near you for information about:

- how to register
- exam dates
- practice materials
- preparation courses.

www.CambridgeESOL.org/centres

Step 4

Pass the exam!

Once you have taken *Cambridge English: Key*, you are one step closer to achieving your dreams and ambitions.

A wide range of support and preparation materials are available to help you get the most out of your exam.

www.CambridgeESOL.org

Cambridge English

noun /'keɪm.brɪdʒ 'ɪŋ.gəlɪʃ/

- An international language including the world's major varieties of English
- English that is understood and used globally for business, study and everyday living
- The English spoken in the real world – not just the classroom
- The most valuable range of English qualifications in the world

Contact us:

University of Cambridge
ESOL Examinations
1 Hills Road
Cambridge
CB1 2EU
United Kingdom

Tel: +44 1223 553997

Email: ESOLHelpdesk@CambridgeESOL.org



www.CambridgeESOL.org



www.Facebook.com/CambridgeESOL



www.Twitter.com/CambridgeESOL

Cambridge English: Key is developed by Cambridge ESOL – one of three major exam boards which form the Cambridge Assessment Group (Cambridge Assessment). Cambridge Assessment, a not-for-profit department of the University of Cambridge, assesses more than 8 million people in 150 countries every year.

